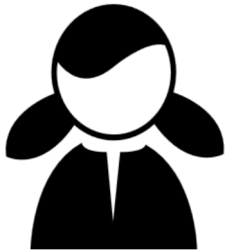


WHO ARE ALASKA'S CTE STUDENTS?

2017-2018 STATEWIDE AVERAGES



43%

Of CTE participants are female

41% Are economically disadvantaged

32% Are NTO*

14% Are LEP† or Migrant

14% Are disabled

* Nontraditional Occupations

† Limited English Proficient

DEMOGRAPHICS



■ Caucasian— 55%;
 ■ Alaska Native—15%;
 ■ Two or more races—9%;
 ■ Asian—8%;
 ■ Hispanic—7%;
 ■ Black—3%;
 ■ Pacific Islander—2%;
 ■ American Indian—1%

CTE IN ALASKA



95% GRADUATION

CTE concentrators‡ are 19% more likely to graduate than their non-CTE counterparts.

‡ Students with ≥ 2.0 HS CTE credits



≈17%

Alaskan graduates are CTE concentrators



34%

Of students took at least one CTE class in high school

69.5%

Of CTE concentrators go on to postsecondary, adv. training, the military, or employment.

| | 2013 | 2014 | 2015 | 2016 | 2017 | 2018 | 6 year trend |
|--|--------|--------|--------|--------|--------|--------|--------------|
| Female participants | 44.23% | 43.61% | 43.05% | 42.32% | 42.56% | 42.77% | ↘ |
| Economically disadvantaged | 38.28% | 38.06% | 34.77% | 38.00% | 40.20% | 40.74% | ↗ |
| NTO | 23.55% | 22.03% | 17.84% | 18.20% | 29.46% | 31.89% | ↑ |
| ELL & Migrant | 12.52% | 13.35% | 12.59% | 13.46% | 13.37% | 14.06% | → |
| Disabled | 12.15% | 12.47% | 13.04% | 11.00% | 13.98% | 13.96% | → |
| | 2013 | 2014 | 2015 | 2016 | 2017 | 2018 | 6 year trend |
| Caucasian | 55.47% | 55.06% | 54.38% | 54.60% | 54.19% | 54.69% | → |
| Alaska Native | 15.92% | 15.81% | 15.94% | 15.98% | 16.09% | 15.00% | → |
| Asian | 7.62% | 7.82% | 7.21% | 7.44% | 7.23% | 7.60% | → |
| Multiracial | 6.66% | 6.94% | 10.16% | 8.28% | 9.49% | 9.21% | ↗ |
| Hispanic | 6.78% | 6.79% | 6.37% | 6.80% | 6.51% | 6.84% | → |
| Black | 3.87% | 3.68% | 3.26% | 3.34% | 3.07% | 3.13% | → |
| Pacific Islander | 2.26% | 2.50% | 1.74% | 2.30% | 2.05% | 2.22% | → |
| American Indian | 1.42% | 1.41% | 0.94% | 1.26% | 1.37% | 1.33% | → |
| | 2013 | 2014 | 2015 | 2016 | 2017 | 2018 | 6 year trend |
| CTE Concentrator graduation rate | 89.54% | 89.84% | 93.00% | 94.55% | 95.44% | 94.43% | ↗ |
| CTE Participants | 38.73% | 34.76% | 29.35% | 32.47% | 31.70% | 33.56% | ↘ |
| % of AK grads who are CTE Concentrators | 24.89% | 19.24% | 17.80% | 18.46% | 18.47% | 17.38% | ↘ |
| Placement rate | 77.06% | 80.52% | 79.80% | 78.90% | 79.00% | 69.45% | ↘ |